

# KOMATSU®

## PC650LC-8 Material Handler

PC650LC

### NET HORSEPOWER

429 HP @ 1800 rpm  
320 kW @ 1800 rpm

### OPERATING WEIGHT

139,424–150,638 lb  
63242–68329 kg

### REACH

55'–60'  
16.8–18.3 m



PHOTOS MAY INCLUDE OPTIONAL EQUIPMENT

PC650LC

# WALK-AROUND

PC650LC-8



Photos may include optional equipment

# PC650LC-8

## Material Handler

**NET HORSEPOWER**  
429 HP @ 1800 rpm  
320 kW @ 1800 rpm

**OPERATING WEIGHT**  
139,424–150,638 lb  
63242–68329 kg

**REACH**  
55'–60'  
16.8–18.3 m

*Komatsu Hydraulic Excavators offer great overall value, reliability and versatility. Engines, pumps valves, cylinders and all other major components are designed to work together to maximize efficiency and productivity. Now add the Material Handling package which is integrated into the base excavator and you have a purpose-built machine that maximizes lift capacity, speed and balance in all scrap handling or bulk material handling applications.*

#### For Use In:

- Scrap Processing
  - Stockpiling of recycled materials
  - Transfer station material feeding
- Bulk Material Handling
  - Coal, coke, and ore
  - Sand and gravel
  - Grain

#### Features:

- Long track provides excellent stability
- Dual function machine, grapple or magnet operation
  - Choice of elevated cabs for excellent all-around visibility
    - Two-pump system provides smooth, fast, compound movements maximizing productivity
    - Centralized lubrication points decrease service time

#### Material Handling System Includes::

- Choice of 16.8 m **55'** or 18.3 m **60'** two-piece attachment with underslung hydraulic cylinders
- Plumbing for grapple operation
- Electrical cable for magnet operation
- Centralized lube plumbing
- Magnet connecting link
- Manual tilt cab riser
- Access platform with stairs and railings
- Optional widened carbody for improved stability
- Front window guard
- Hydraulic control package provides functions to open, close, and rotate grapple. Includes control handles and switches in cab
- Hydraulic-driven 25 kw generator
- Generator controller and magnet instrumentation mounted in the cab riser. Load power gauge with operating switches installed in operator's cab
- Parts, service, and operator's manuals

#### Hydraulics

Unique two-pump system provides smooth compound movement of the work equipment. Open Center Load Sensing System (OLSS) controls all pumps for efficient engine power use. This system also reduces hydraulic loss during operation.



#### Large Comfortable Cab

Low noise and vibration with cab damper mounting.

#### Environment-Friendly Clean Engine

The PC650LC-8 gets its exceptional power and work capacity from a Komatsu engine. Net output is 320 kW **429 HP**, providing increased hydraulic power and improved fuel efficiency.

Komatsu's SAA6D140E-5 engine is EPA Tier 3 emissions certified.

## KOMTRAX®

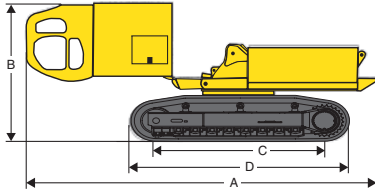
Komtrax equipped machines can send location, SMR and operation maps to a secure website utilizing wireless technology. Machines also relay error codes, cautions, maintenance items, fuel levels, and much more.





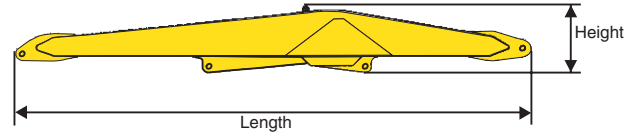
## SHIPPING WEIGHTS AND DIMENSIONS (APPROXIMATE)

### Base Machine



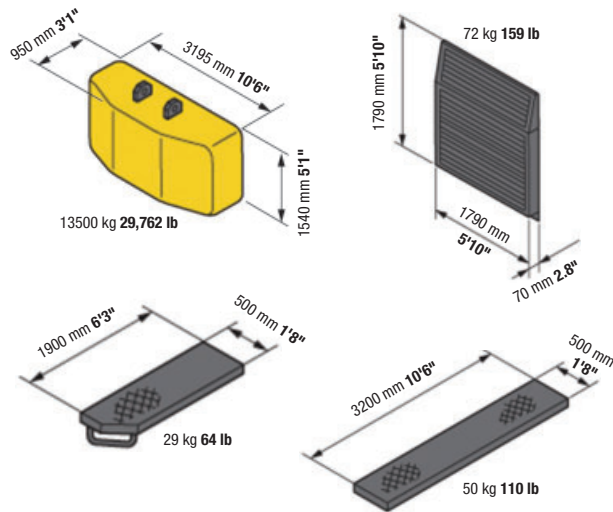
Description	Dimensions
<b>A</b> Overall length	8788 mm <b>28'10"</b>
<b>B</b> Overall height	3251 mm <b>10'8"</b>
<b>C</b> Length of track on ground	4600 mm <b>15'1"</b>
<b>D</b> Length of track	5690 mm <b>18'8"</b>
Track gauge	4060 mm <b>13'4"</b>
Overall width, Retracted	3937 mm <b>12'11"</b>
Overall width, Extended	4979 mm <b>16'4"</b>
Weight	42821 kg <b>94,403 lb</b>
Weight with generator	43773 kg <b>96,503 lb</b>

### 2-Piece Front

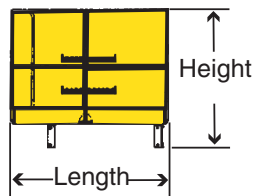


Description	K02US55-PC650-8 16.8 m 55' front		K02US60-PC650-8 18.3 m 60' front	
	Boom	Stick	Boom	Stick
Length	9983 mm <b>32'9"</b>	7722 mm <b>25'4"</b>	10592 mm <b>34'9"</b>	8560 mm <b>28'1"</b>
Width	1118 mm <b>3'8"</b>	508 mm <b>1'8"</b>	1118 mm <b>3'8"</b>	508 mm <b>1'8"</b>
Height	1499 mm <b>4'11"</b>	1474 mm <b>4'10"</b>	1549 mm <b>5'1"</b>	1550 mm <b>5'1"</b>
Weight	6499 kg <b>13,327 lb</b>	2889 kg <b>6,370 lb</b>	6944 kg <b>15,310 lb</b>	3085 kg <b>6,801 lb</b>

### Others

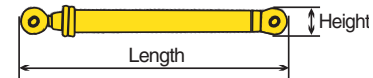


### Platform, Ladder, and Railing



Description	1981 mm 78" (6'6") Riser
Dimensions	L x W x H 1651 mm x 1346 mm x 1270 mm <b>5'5" x 4'5" x 4'2"</b>
Weight	204 kg <b>450 lb</b>

### Arm Cylinder Group



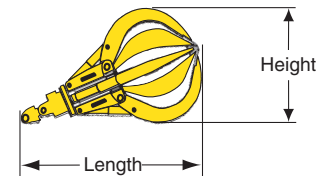
Description	3-Piece Front
Length	3048 mm <b>10'0"</b>
Width	559 mm <b>1'10"</b>
Height	305 mm <b>1'0"</b>
Weight	694 kg <b>1,530 lb</b>

### Boom Cylinders



Description	
Length	2616 mm <b>8'7"</b>
Width	305 mm <b>1'0"</b>
Height	356 mm <b>1'2"</b>
Weight	642 kg <b>1,416 lb</b> each x 2

### Grapple



Description	Model L0300C
Dimensions	L x W x H 3505 mm x 2134 mm x 2134 mm <b>11'6" x 7'0" x 7'0"</b>
Weight	3629 kg <b>8,000 lb</b>

# LIFT CAPACITIES



## LIFTING CAPACITY

- A: Reach from swing center
- B: Stick tip height
- C: Lifting capacity
- Cf: Rating over front
- Cs: Rating over side

- Conditions:  
(In addition to PC650LC-8 base machine)
- 2-piece front attachment with hydraulic cylinders
  - 1981 mm **78"** manual tilt cab riser with platform, stairs, and handrails
  - Front window guard

- Hydraulic plumbing and control package for grapple operation
- Widened car body
- 4,400 psi working pressure
- 3302 mm **130"** gauge
- 750 mm **29.5"** shoes

PC650LC-8		Young 2-Piece Front - 16.8 m 55' / 3302 mm 130" gauge (K02US55-PC650LC-8)																Unit: kg lb		
A	B	4.6 m 15'		6.1 m 20'		7.6 m 25'		9.1 m 30'		10.7 m 35'		12.2 m 40'		13.7 m 45'		15.2 m 50'		16.8 m 55'		
		Cf	Cs	Cf	Cs	Cf	Cs	Cf	Cs	Cf	Cs	Cf	Cs	Cf	Cs	Cf	Cs	Cf	Cs	
18.3 m	60'																			
16.8 m	55'			*10205	*10250															
				<b>*22,500</b>	<b>*22,500</b>															
15.2 m	50'					*9800	*9800	*7700	*7700											
						<b>*21,800</b>	<b>*21,800</b>	<b>*17,000</b>	<b>*17,000</b>											
13.7 m	45'			*10600	*10600	*9500	*9500	*7200	*7200											
				<b>*23,400</b>	<b>*23,400</b>	<b>*21,000</b>	<b>*21,000</b>	<b>*16,000</b>	<b>*16,000</b>											
12.2 m	40'			*11000	*11000	*10300	*10300	*9000	*9000	*6100	*6100									
				<b>*24,400</b>	<b>*24,400</b>	<b>*22,900</b>	<b>*22,900</b>	<b>*19,900</b>	<b>*19,900</b>	<b>*13,500</b>	<b>*13,500</b>									
10.7 m	35'			*11400	*11400	*11000	*11000	*10000	9300	8200	7400									
				<b>*25,200</b>	<b>*25,200</b>	<b>*24,400</b>	<b>*24,400</b>	<b>*22,200</b>	<b>20,500</b>	<b>*18,100</b>	<b>16,500</b>									
9.1 m	30'			*11900	*11900	*11600	11500	*10500	9200	*9400	7400	*6400	6000							
				<b>*26,400</b>	<b>*26,400</b>	<b>*25,600</b>	<b>25,500</b>	<b>*23,200</b>	<b>20,400</b>	<b>*20,800</b>	<b>16,500</b>	<b>*14,200</b>	<b>13,400</b>							
7.6 m	25'			*12900	*12900	*11800	11300	*10600	9000	*9600	7400	*7900	6000							
				<b>*28,500</b>	<b>*28,500</b>	<b>*26,200</b>	<b>24,900</b>	<b>*23,500</b>	<b>20,000</b>	<b>*21,200</b>	<b>16,300</b>	<b>*17,600</b>	<b>13,400</b>							
6.1 m	20'			*13800	*13800	*13800	*13800	*12100	10900	*10800	8800	*9600	7200	8300	5900					
				<b>*30,600</b>	<b>*30,600</b>	<b>*30,600</b>	<b>*30,600</b>	<b>*26,800</b>	<b>24,100</b>	<b>*23,800</b>	<b>19,400</b>	<b>*21,300</b>	<b>15,900</b>	<b>18,300</b>	<b>13,200</b>					
4.6 m	15'	*17100	*17100	*17100	*17100	*14400	13300	*12400	10500	*10900	8500	9600	7000	8100	5900	*5500	4900			
		<b>*37,800</b>	<b>*37,800</b>	<b>*37,700</b>	<b>*37,700</b>	<b>*31,800</b>	<b>29,400</b>	<b>*27,500</b>	<b>23,200</b>	<b>*24,200</b>	<b>18,800</b>	<b>21,300</b>	<b>15,500</b>	<b>18,000</b>	<b>13,000</b>	<b>*12,200</b>	<b>10,900</b>			
3.0 m	10'	*22600	*22600	*17900	16500	*14800	12600	*12800	10000	*11000	8200	9400	6800	8000	5700	*6200	4800			
		<b>*50,000</b>	<b>*50,000</b>	<b>*39,600</b>	<b>36,400</b>	<b>*32,800</b>	<b>27,900</b>	<b>*28,000</b>	<b>22,200</b>	<b>*24,300</b>	<b>18,100</b>	<b>20,900</b>	<b>15,000</b>	<b>17,700</b>	<b>12,700</b>	<b>*13,700</b>	<b>10,700</b>			
1.5 m	5'	*21500	21100	*18400	15400	*15100	11900	*12700	9600	*10900	7800	9200	6600	7800	5600	*6300	4800			
		<b>*47,500</b>	<b>46,700</b>	<b>*40,600</b>	<b>34,100</b>	<b>*33,300</b>	<b>26,400</b>	<b>*28,200</b>	<b>21,200</b>	<b>*24,200</b>	<b>17,400</b>	<b>20,400</b>	<b>14,600</b>	<b>17,400</b>	<b>12,400</b>	<b>*14,100</b>	<b>10,600</b>			
0.0 m	0'	*10800	*10800	*18200	14600	*14900	11400	*12500	9200	*10700	7600	9000	6400	*7600	5400					
		<b>*23,900</b>	<b>*23,900</b>	<b>*40,200</b>	<b>32,300</b>	<b>*33,000</b>	<b>25,200</b>	<b>*27,700</b>	<b>20,300</b>	<b>*23,600</b>	<b>16,800</b>	<b>20,000</b>	<b>14,200</b>	<b>*16,900</b>	<b>12,100</b>					
-1.5 m	-5'	*9500	*9500	*17300	14000	*14300	10900	*12000	8900	*10100	7400	*8500	6300	*6900	5400					
		<b>*21,000</b>	<b>*21,000</b>	<b>*38,300</b>	<b>31,000</b>	<b>*31,600</b>	<b>24,200</b>	<b>*26,500</b>	<b>19,700</b>	<b>*22,400</b>	<b>16,400</b>	<b>*18,900</b>	<b>13,900</b>	<b>*15,300</b>	<b>12,000</b>					
-3.0 m	-10'	*10000	*10000	*15800	13700	*13200	10700	*11000	8700	*9300	7300	*7600	6200	*5700	5400					
		<b>*22,200</b>	<b>*22,200</b>	<b>*34,900</b>	<b>30,300</b>	<b>*29,100</b>	<b>23,700</b>	<b>*24,400</b>	<b>19,200</b>	<b>*20,500</b>	<b>16,100</b>	<b>*16,800</b>	<b>13,700</b>	<b>*12,700</b>	<b>11,900</b>					
-4.6 m	-15'	*11300	*11300	*13500	*13500	*11400	10600	*9600	8600	*7900	7200	*6200	6200							
		<b>*25,000</b>	<b>*25,000</b>	<b>*29,900</b>	<b>*29,900</b>	<b>*25,300</b>	<b>23,400</b>	<b>*21,300</b>	<b>19,000</b>	<b>*17,500</b>	<b>15,900</b>	<b>*13,700</b>	<b>13,700</b>							

**Note:** Capacities are measured at the bare stick tip.  
Capacities marked with an asterisk (\*) are limited by hydraulic capacities rather than stabilities.

- Lifting capacities shown do not exceed 75% of minimum tipping loads or 87% of hydraulic capacities. Data supplied by AEM.
- Lifting capacities shown should not be exceeded. Weight of all lifting accessories must be considered part of the load.
- Lifting capacities assume the machine is standing level on a firm, uniform supporting surface. The user must make allowances for unfavorable job conditions such as soft or uneven ground or sudden stopping of loads.
- The least stable position is over the side.
- The operator should be fully acquainted with the Operation Manual before operating the machine.
- Capacities apply only to the machine equipped as stated here.
- Capacities are based on PCSA gross rated loads.



## LIFTING CAPACITY

A: Reach from swing center  
 B: Stick tip height  
 C: Lifting capacity  
 Cf: Rating over front  
 Cs: Rating over side

Conditions:  
 (In addition to PC650LC-8 base machine)

- 2-piece front attachment with hydraulic cylinders
- 1981 mm **78"** manual tilt cab riser with platform, stairs, and handrails
- Front window guard

- Hydraulic plumbing and control package for grapple operation
- Widened car body
- 4,400 psi working pressure
- 4065 mm **160"** gauge
- 750 mm **29.5"** shoes

PC650LC-8

Young 2-Piece Front - 16.8 m 55' / 4064 mm 160" gauge (K02US55-PC650LC-8)

Unit: kg lb

A B	4.6 m 15'		6.1 m 20'		7.6 m 25'		9.1 m 30'		10.7 m 35'		12.2 m 40'		13.7 m 45'		15.2 m 50'		16.8 m 55'		
	Cf	Cs	Cf	Cs	Cf	Cs	Cf	Cs	Cf	Cs	Cf	Cs	Cf	Cs	Cf	Cs	Cf	Cs	
18.3 m 60'																			
16.8 m 55'					*10300	*10300													
					<b>*22,800</b>	<b>*22,800</b>													
15.2 m 50'							*9900	*9900	*7800	*7800									
							<b>*21,900</b>	<b>*21,900</b>	<b>*17,400</b>	<b>*17,400</b>									
13.7 m 45'							*10600	*10600	*9500	*9500	*7400	*7400							
							<b>*23,500</b>	<b>*23,500</b>	<b>*21,100</b>	<b>*21,100</b>	<b>*16,400</b>	<b>*16,400</b>							
12.2 m 40'							*11000	*11000	*10400	*10400	*9100	*9100	*6300	*6300					
							<b>*24,400</b>	<b>*24,400</b>	<b>*23,000</b>	<b>*23,000</b>	<b>*20,100</b>	<b>*20,100</b>	<b>*13,900</b>	<b>*13,900</b>					
10.7 m 35'							*11400	*11400	*11100	*11100	*10100	*10100	*8300	*8300					
							<b>*25,300</b>	<b>*25,300</b>	<b>*24,500</b>	<b>*24,500</b>	<b>*22,400</b>	<b>*22,400</b>	<b>*18,300</b>	<b>*18,300</b>					
9.1 m 30'							*12000	*12000	*11600	*11600	*10500	*10500	*9500	*9500	*6500	*6500			
							<b>*26,500</b>	<b>*26,500</b>	<b>*25,700</b>	<b>*25,700</b>	<b>*23,300</b>	<b>*23,300</b>	<b>*21,000</b>	<b>*21,000</b>	<b>*14,500</b>	<b>*14,500</b>			
7.6 m 25'					*12200	*12200	*13000	*13000	*11800	*11800	*10700	*10700	*9600	*9600	*8000	*8000			
					<b>*26,900</b>	<b>*26,900</b>	<b>*28,700</b>	<b>*28,700</b>	<b>*26,200</b>	<b>*26,200</b>	<b>*23,500</b>	<b>*23,500</b>	<b>*21,200</b>	<b>*21,200</b>	<b>*17,800</b>	<b>*17,800</b>			
6.1 m 20'					*14000	*14000	*13900	*13900	*12200	*12200	*10800	*10800	*9600	9600	*8500	8000			
					<b>*31,000</b>	<b>*31,000</b>	<b>*30,700</b>	<b>*30,700</b>	<b>*26,900</b>	<b>*26,900</b>	<b>*23,900</b>	<b>*23,900</b>	<b>*21,300</b>	<b>21,200</b>	<b>*18,900</b>	<b>17,800</b>			
4.6 m 15'			*17800	*17800	*17100	*17100	*14400	*14400	*12500	*12500	*10900	*10900	*9700	9400	*8500	7900	*5500	*5500	
			<b>*39,400</b>	<b>*39,400</b>	<b>*37,900</b>	<b>*37,900</b>	<b>*31,900</b>	<b>*31,900</b>	<b>*27,600</b>	<b>*27,600</b>	<b>*24,200</b>	<b>*24,200</b>	<b>*21,400</b>	<b>20,800</b>	<b>*18,800</b>	<b>17,600</b>	<b>*12,300</b>	<b>*12,300</b>	
3.0 m 10'			*22700	*22700	*18000	*18000	*14900	*14900	*12700	*12700	*11000	11000	*9600	9200	*8400	7800	*6200	*6200	
			<b>*50,100</b>	<b>*50,100</b>	<b>*39,700</b>	<b>*39,700</b>	<b>*32,900</b>	<b>*32,900</b>	<b>*28,000</b>	<b>*28,000</b>	<b>*24,300</b>	<b>24,300</b>	<b>*21,300</b>	<b>20,300</b>	<b>*18,500</b>	<b>17,300</b>	<b>*13,800</b>	<b>*13,800</b>	
1.5 m 5'			*19700	*19700	*18400	*18400	*15100	*15100	*12800	*12800	*10900	10700	*9400	9000	*8000	7700	*6300	*6300	
			<b>*43,600</b>	<b>*43,600</b>	<b>*40,600</b>	<b>*40,600</b>	<b>*33,300</b>	<b>*33,300</b>	<b>*28,200</b>	<b>*28,200</b>	<b>*24,200</b>	<b>23,600</b>	<b>*20,900</b>	<b>19,900</b>	<b>*17,800</b>	<b>17,000</b>	<b>*14,000</b>	<b>*14,000</b>	
0.0 m 0'			*10600	*10600	*18100	*18100	*14900	*14900	*12500	12500	*10700	10400	*9100	8800	*7600	7500			
			<b>*23,400</b>	<b>*23,400</b>	<b>*40,100</b>	<b>*40,100</b>	<b>*32,900</b>	<b>*32,900</b>	<b>*27,700</b>	<b>27,700</b>	<b>*23,600</b>	<b>23,000</b>	<b>*20,100</b>	<b>19,500</b>	<b>*16,800</b>	<b>16,700</b>			
-1.5 m -5'			*9500	*9500	*17200	*17200	*14200	*14200	*11900	*11900	*10100	*10100	*8500	*8500	*6800	*6800			
			<b>*21,000</b>	<b>*21,000</b>	<b>*38,100</b>	<b>*38,100</b>	<b>*31,500</b>	<b>*31,500</b>	<b>*26,400</b>	<b>*26,400</b>	<b>*22,300</b>	<b>*22,300</b>	<b>*18,800</b>	<b>*18,800</b>	<b>*15,100</b>	<b>*15,100</b>			
-3.0 m -10'			*10100	*10100	*15600	*15600	*13100	*13100	*11000	*11000	*9200	*9200	*7500	*7500	*5600	*5600			
			<b>*22,300</b>	<b>*22,300</b>	<b>*34,600</b>	<b>*34,600</b>	<b>*28,900</b>	<b>*28,900</b>	<b>*24,300</b>	<b>*24,300</b>	<b>*20,300</b>	<b>*20,300</b>	<b>*16,600</b>	<b>*16,600</b>	<b>*12,500</b>	<b>*12,500</b>			
-4.6 m -15'			*11400	*11400	*13300	*13300	*11300	*11300	*9500	*9500	*7800	*7800	*6000	*6000					
			<b>*25,200</b>	<b>*25,200</b>	<b>*29,500</b>	<b>*29,500</b>	<b>*25,000</b>	<b>*25,000</b>	<b>*21,000</b>	<b>*21,000</b>	<b>*17,300</b>	<b>*17,300</b>	<b>*13,400</b>	<b>*13,400</b>					

**Note:** Capacities are measured at the bare stick tip.  
 Capacities marked with an asterisk (\*) are limited by hydraulic capacities rather than stabilities.

1. Lifting capacities shown do not exceed 75% of minimum tipping loads or 87% of hydraulic capacities. Data supplied by AEM.
2. Lifting capacities shown should not be exceeded. Weight of all lifting accessories must be considered part of the load.
3. Lifting capacities assume the machine is standing level on a firm, uniform supporting surface. The user must make allowances for unfavorable job conditions such as soft or uneven ground or sudden stopping of loads.
4. The least stable position is over the side.
5. The operator should be fully acquainted with the Operation Manual before operating the machine.
6. Capacities apply only to the machine equipped as stated here.
7. Capacities are based on PCSA gross rated loads.



## LIFTING CAPACITY

- A: Reach from swing center
- B: Stick tip height
- C: Lifting capacity
- Cf: Rating over front
- Cs: Rating over side

- Conditions:  
(In addition to PC650LC-8 base machine)
- 2-piece front attachment with hydraulic cylinders
  - 1981 mm **78"** manual tilt cab riser with platform, stairs, and handrails
  - Front window guard

- Hydraulic plumbing and control package for grapple operation
- Widened car body
- 4,400 psi working pressure
- 3302 mm **130"** gauge
- 750 mm **29.5"** shoes

PC650LC-8

Young 2-Piece Front - 18.3 m 60' / 3302 mm 130" gauge (K02US60-PC650LC-8)

Unit: kg lb

A \ B	6.1 m 20'		7.6 m 25'		9.1 m 30'		10.7 m 35'		12.2 m 40'		13.7 m 45'		15.2 m 50'		16.8 m 55'		18.3 m 60'		
	Cf	Cs	Cf	Cs	Cf	Cs	Cf	Cs	Cf	Cs	Cf	Cs	Cf	Cs	Cf	Cs	Cf	Cs	
18.3 m 60'																			
16.8 m 55'					*9100	*9100	*7500	*7500											
15.2 m 50'					*20,100	*20,100	*16,600	*16,600											
13.7 m 45'							*8700	*8700	*7300	*7300									
12.2 m 40'							*19,300	*19,300	*16,100	*16,100									
10.7 m 35'							*9300	*9300	*8400	*8400	*6700	*6700							
9.1 m 30'							*20,600	*20,600	*18,600	*18,600	*14,800	*14,800							
7.6 m 25'							*9700	*9700	*9100	*9100	*7600	*7600	*5600	*5600					
6.1 m 20'							*21,500	*21,500	*20,200	*20,200	*17,600	16,900	*12,500	*12,500					
4.6 m 15'	*13200	*13200	*15200	*15200	*13800	*13800	*10100	*10100	*9700	*9700	*8800	*7600	*7200	*6200					
3.0 m 10'	*29,100	*29,100	*33,700	*33,700	*30,500	29,400	*26,300	23,100	*23,100	18,600	*20,400	15,300	17,800	12,700	15,100	10,700			
1.5 m 5'			*17200	16400	*14200	12500	*12100	9900	*10500	8000	*9200	6600	7900	5500	5700	4700	*4900	3900	
0.0 m 0'	*8700	*8700	*17600	14200	*14400	11000	*12100	8900	*10300	7300	8800	6100	7500	5200	*6400	4400			
-1.5 m -5'	*19,300	*19,300	*38,900	31,300	*31,900	24,400	*26,800	19,700	*22,900	16,200	19,400	13,600	16,600	11,600	*14,200	9,900			
-3.0 m -10'	*7500	*7500	*16900	13400	*13900	10500	*11700	8500	*9900	7000	*8500	5900	*7200	5100	*5800	4400			
-4.6 m -15'	*16,600	*16,600	*37,300	29,700	*30,800	23,200	*25,900	18,800	*22,000	15,600	*18,800	13,200	*15,900	11,300	*12,900	9,800			
-6.1 m -20'	*17,400	*17,400	*34,400	28,700	*28,700	22,500	*24,200	18,200	*20,600	15,200	*17,300	12,900	*14,300	11,100	*10,800	9,700			
	*8800	*8800	*13700	12800	*11600	9900	*9800	8100	*8300	6700	*6800	5700	*5400	4900					
	*19,500	*19,500	*30,200	28,300	*25,600	22,000	*21,700	17,900	*18,300	14,900	*15,100	12,700	*11,900	11,000					
			*11200	*11200	*9700	*9700	*8200	*8000	*6800	6700	*5400	*5400							
			*24,700	*24,700	*21,400	*21,400	*18,100	17,800	*15,100	14,900	*12,000	*12,000							

**Note:** Capacities are measured at the bare stick tip.  
Capacities marked with an asterisk (\*) are limited by hydraulic capacities rather than stabilities.

- Lifting capacities shown do not exceed 75% of minimum tipping loads or 87% of hydraulic capacities. Data supplied by AEM.
- Lifting capacities shown should not be exceeded. Weight of all lifting accessories must be considered part of the load.
- Lifting capacities assume the machine is standing level on a firm, uniform supporting surface. The user must make allowances for unfavorable job conditions such as soft or uneven ground or sudden stopping of loads.
- The least stable position is over the side.
- The operator should be fully acquainted with the Operation Manual before operating the machine.
- Capacities apply only to the machine equipped as stated here.
- Capacities are based on PCSA gross rated loads.





## LIFTING CAPACITY

- A: Reach from swing center
- B: Stick tip height
- C: Lifting capacity
- Cf: Rating over front
- Cs: Rating over side

- Conditions:  
(In addition to PC650LC-8 base machine)
- 2-piece front attachment with hydraulic cylinders
  - 1981 mm 78" manual tilt cab riser with platform, stairs, and handrails
  - Front window guard

- Hydraulic plumbing and control package for grapple operation
- Widened car body
- 4,400 psi working pressure
- 4065 mm 160" gauge
- 750 mm 29.5" shoes

PC650LC-8 Young 2-Piece Front - 18.3 m 60' / 4064 mm 160" gauge (K02US60-PC650LC-8) Unit: kg lb

A \ B	6.1 m 20'		7.6 m 25'		9.1 m 30'		10.7 m 35'		12.2 m 40'		13.7 m 45'		15.2 m 50'		16.8 m 55'		18.3 m 60'		
	Cf	Cs	Cf	Cs	Cf	Cs	Cf	Cs	Cf	Cs	Cf	Cs	Cf	Cs	Cf	Cs	Cf	Cs	
18.3 m 60'																			
16.8 m 55'					*9100	*9100	*7600	*7600											
15.2 m 50'					*20,200	*20,200	*16,900	*16,900											
13.7 m 45'							*8800	*8800	*7400	*7400									
12.2 m 40'							*19,400	*19,400	*16,300	*16,300									
10.7 m 35'							*9300	*9300	*8400	*8400	*6800	*6800							
9.1 m 30'							*20,700	*20,700	*18,700	*18,700	*15,100	*15,100							
7.6 m 25'							*9800	*9800	*9200	*9200	*8000	*8000	*5800	*5800					
6.1 m 20'							*21,600	*21,600	*20,300	*20,300	*17,700	*17,700	*12,800	*12,800					
4.6 m 15'	*13700	*13700	*15700	*15700	*13800	*13800	*11900	*11900	*10400	*10400	*9200	*9200	*8200	*8200	*7200	*7200			
3.0 m 10'			*17200	*17200	*14200	*14200	*12200	*12200	*10500	*10500	*9200	*9000	*8100	*7700	*7000	*6500	*4900	*5600	
1.5 m 5'	*17000	*17000	*17700	*17700	*14500	*14500	*12200	*12200	*10500	*10500	*9100	*8800	*7900	*7400	*6800	*6400	*5000	*5600	
0.0 m 0'	*8500	*8500	*17600	*17600	*14400	*14400	*12100	*12100	*10300	*10100	*8900	*8500	*7600	*7300	*6400	*6300			
-1.5 m -5'	*7500	*7500	*16800	*16800	*13900	*13900	*11700	*11700	*9900	*9800	*8500	*8300	*7100	*7100	*5800	*5800			
-3.0 m -10'	*7900	*7900	*15500	*15500	*12900	*12900	*10900	*10900	*9200	*9200	*7800	*7800	*6400	*6400	*4800	*4800			
-4.6 m -15'	*8900	*8900	*13500	*13500	*11500	*11500	*9700	*9700	*8200	*8200	*6800	*6800	*5300	*5300					
-6.1 m -20'			*11000	*11000	*9500	*9500	*8100	*8100	*6700	*6700	*5300	*5300							

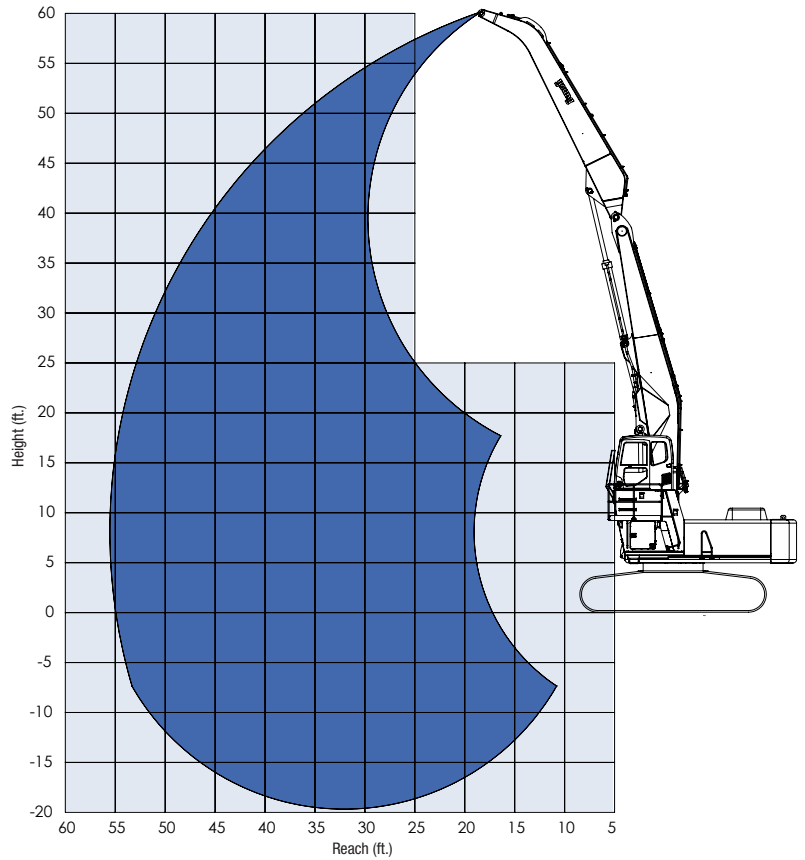
**Note:** Capacities are measured at the bare stick tip.  
Capacities marked with an asterisk (\*) are limited by hydraulic capacities rather than stabilities.

1. Lifting capacities shown do not exceed 75% of minimum tipping loads or 87% of hydraulic capacities. Data supplied by AEM.
2. Lifting capacities shown should not be exceeded. Weight of all lifting accessories must be considered part of the load.
3. Lifting capacities assume the machine is standing level on a firm, uniform supporting surface. The user must make allowances for unfavorable job conditions such as soft or uneven ground or sudden stopping of loads.
4. The least stable position is over the side.
5. The operator should be fully acquainted with the Operation Manual before operating the machine.
6. Capacities apply only to the machine equipped as stated here.
7. Capacities are based on PCSA gross rated loads.

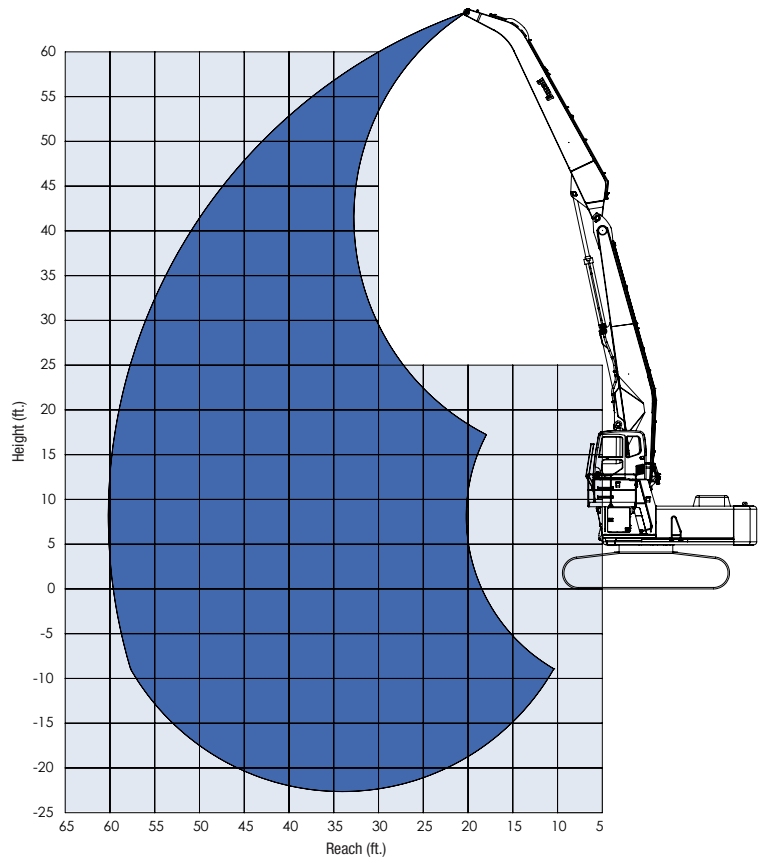


**WORKING RANGE**

**Young 2-Piece Front — 16.8 m 55'**  
 (KO2US55-PC650LC-8)  
 Maximum Height — 18.5 m 60'10"  
 Maximum Reach — 16.8 m 55'



**Young 2-Piece Front — 18.3 m 60'**  
 (KO2US60-PC650LC-8)  
 Maximum Height — 18.6 m 61'2"  
 Maximum Reach — 18.3 m 60'

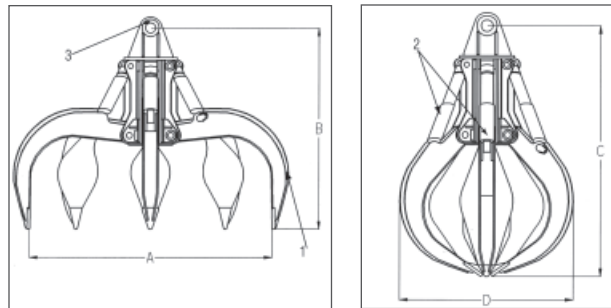


## ATTACHMENTS

### Grapple Selection Guide

Model	PC650LC-8	
	Young	
Recommended Grapple Model	LO-300C	LO-205C
	16.8 m 55' front	18.3 m 60' front
Size	2.29 m <sup>3</sup> <b>3.0 yd<sup>3</sup></b>	1.53 m <sup>3</sup> <b>2.0 yd<sup>3</sup></b>
Weight	3629 kg <b>8,000 lb</b>	3402 kg <b>7,500 lb</b>
A	3200 mm <b>126"</b>	3048 mm <b>120"</b>
B	2896 mm <b>114"</b>	2473 mm <b>108"</b>
C	3480 mm <b>137"</b>	3429 mm <b>135"</b>
D	2184 mm <b>86"</b>	1930 mm <b>76"</b>

### Typical 5-Tine Grapple (Orange Peel)



1. Grapple Tines    2. Grapple Cylinders    3. Mounting Pin

#### Grapple Applications:

Select a grapple whose weight including material does not exceed the lift capacity shown for your specific machine.

**Note:** Conditions and material densities vary.

Confirm your specific load density before determining safe machine balance.

#### General Material Weights:

1. Steel scrap, clippings compressed or bundled weigh approximately 912 kg **2,025 lbs per yd<sup>3</sup>**.
2. Shredded steel scraps, unprepared, weigh approximately 608 kg **1,350 lbs per yd<sup>3</sup>**.

### General Magnet Selection Guide

Magnet Size			Generator KW Rating	Approximate Magnet Operating Weight	Lifting Capacity						
Diameter	Max Cold Amps				10	15	20	25	33	A	B
40"	1016 mm	30	T	816 kg	<b>1,800 lb</b>	408 kg	<b>900 lb</b>	272 kg	<b>600 lb</b>	170 kg	<b>375 lb</b>
45"	1143 mm	39	M	1270 kg	<b>2,800 lb</b>	816 kg	<b>1,800 lb</b>	499 kg	<b>1,100 lb</b>	283 kg	<b>625 lb</b>
48"	1219 mm	58	T	1315 kg	<b>2,900 lb</b>	794 kg	<b>1,750 lb</b>	426 kg	<b>1,160 lb</b>	272 kg	<b>600 lb</b>
57"	1447 mm	58	M	1860 kg	<b>4,100 lb</b>	1225 kg	<b>2,700 lb</b>	805 kg	<b>1,775 lb</b>	385 kg	<b>850 lb</b>
57"	1447 mm	80	T	1996 kg	<b>4,400 lb</b>	1225 kg	<b>2,700 lb</b>	816 kg	<b>1,800 lb</b>	385 kg	<b>850 lb</b>
66"	1676 mm	80	M	2812 kg	<b>6,200 lb</b>	1860 kg	<b>4,100 lb</b>	1247 kg	<b>2,750 lb</b>	612 kg	<b>1,350 lb</b>
66"	1676 mm	100	T	2903 kg	<b>6,400 lb</b>	1860 kg	<b>4,100 lb</b>	1247 kg	<b>2,750 lb</b>	612 kg	<b>1,350 lb</b>
72"	1828 mm	103	M	3719 kg	<b>8,200 lb</b>	2132 kg	<b>4,700 lb</b>	1429 kg	<b>3,150 lb</b>	680 kg	<b>1,500 lb</b>
72"	1828 mm	132	T	3765 kg	<b>8,300 lb</b>	2132 kg	<b>4,700 lb</b>	1429 kg	<b>3,150 lb</b>	680 kg	<b>1,500 lb</b>
78"	1981 mm	132	M	4445 kg	<b>9,800 lb</b>	2585 kg	<b>5,700 lb</b>	1776 kg	<b>3,915 lb</b>	844 kg	<b>1,860 lb</b>

T = Typical    M = Maximum

#### Magnet Selection:

1. Select a magnet whose weight, including lifted material, does not exceed the lift capacity shown for your specific machine.

2. Select a magnet with a cold amp rating equal to or less than the figures shown in this chart.

#### Legend:

A: Pig iron and #1 hot melt; refers in general to low iron content slag or slabs.

B: #2 broken; scrap steel or cut offs.

C: Steel turnings; scrap from machining processes.



## STANDARD EQUIPMENT

### ENGINE AND RELATED ITEMS:

- Air cleaner, double element, dry type
- Engine, Komatsu SAA6D140E-5
- Fuel pre-filter (10 micron) with water separator
- Fuel primary filter (2 micron)
- Variable speed cooling fan, hydraulic drive, reversible

### ELECTRICAL SYSTEM:

- Alternator, 75 amp, 24 V
- Batteries, 170 Ah, 2 x 12 V
- Starting motor, 11kW
- Working lights 2 (boom and RH)
- Auto decelerator

### UNDERCARRIAGE:

- 900 mm **35.5"** triple grouser shoes
- 9 track/3 carrier rollers (each side)
- Hydraulic track adjusters (each side)
- Variable track gauge
- Sealed track

### GUARDS AND COVERS:

- Pump/engine room partition
- Track frame undercover (center)
- Travel motor guards
- Strengthened revolving frame underguard

### OPERATOR ENVIRONMENT:

- Damper mount, all-weather, soundsuppressed cab with tinted glass windows, lockable door, intermittent window wiper and washer, floor mat, cigarette lighter and ashtray, automatic air conditioner, AM-FM radio, seat belt (retractable) 78 mm **3"** wide

- Multi-function color monitor, fuel control dial, service meter, gauges (coolant temperature, hydraulic oil temperature and fuel level), caution lights (electric charge, engine oil pressure, and air cleaner clogging), indicator lights (engine preheating and swing lock) level check lights (coolant and engine oil level), selfdiagnostic system with trouble data memory
- High-back suspension seat, heated
- Cab with pull-up type front window
- Rearview mirrors (RH & LH)
- Rear-view camera (1)
- Operator protective guard (OPG), Level 1

### HYDRAULIC CONTROLS:

- Fully hydraulic, with Open-Center Load-Sensing (OLSS) and engine speed sensing (pump and engine mutual control system)
- One gear pump for control circuit
- Two axial piston motors for swing with single-stage relief valve
- One axial piston motor per track for travel with counter balance valve
- Two variable capacity piston main pumps
- Control valves, 5+4 spools (boom, arm, bucket, swing, and travel)
- Control levers, wrist control levers for arm, boom, bucket, and swing with PPC system
- Control levers and pedals for steering and travel with PPC system
- Oil cooler
- In-line high pressure filters
- 3 mode system (Power, Economy, Lifting)
- Two-mode setting for boom
- Power max function
- Boom and arm holding valves

### DRIVE AND BRAKE SYSTEM:

- Brakes, hydraulic lock travel brakes, oil disc parking
- Hydrostatic two travel speed system with planetary triple reduction final drive

### OTHER STANDARD EQUIPMENT:

- Automatic swing holding brake
- Catwalk and handrails
- Corrosion resister
- Counterweight, 13500 kg **29,762 lb**
- Grease gun, electric pump type
- Horn, electric
- Interconnected horn and warning light
- KOMTRAX® monitoring system
- Large handrails
- Marks and plates, English
- One-touch engine oil drainage
- Paint, Komatsu standard
- PM tune-up service connector
- Power supply, 12V
- Travel alarm
- Slip-resistant plates



## OPTIONAL EQUIPMENT

- Front
  - 16.8 m **55'** 2-piece MH
  - 18.3 m **60'** 2-piece MH
- Cab riser
  - 1981 mm **78"** manual tilt
- Front window guard
- Front Guard Level 2\*
- Grapples
  - 1.53 m<sup>3</sup> **2.0 yd<sup>3</sup>** orange peel
  - 2.29 m<sup>3</sup> **3.0 yd<sup>3</sup>** orange peel
- Hydraulic plumbing for grapple
- 25 kW hydraulic drive generator (requires 1981 mm **78"** riser)
- Top Guard Level 2\*

- Track roller guards (full length)
- Track frame undercover
- Widened carbody (762 mm **30"**)

\* Check local regulations or requirements for Front Guard or Top Guard